

**Card Base:** 1 piece of Cardstock  
8 ½" x 5 ½"

**Score Line** - - - - -

**Cut Line** \_\_\_\_\_

*Step 1: Score*

- 2 1/8" from each side

*Step 2: Cut*

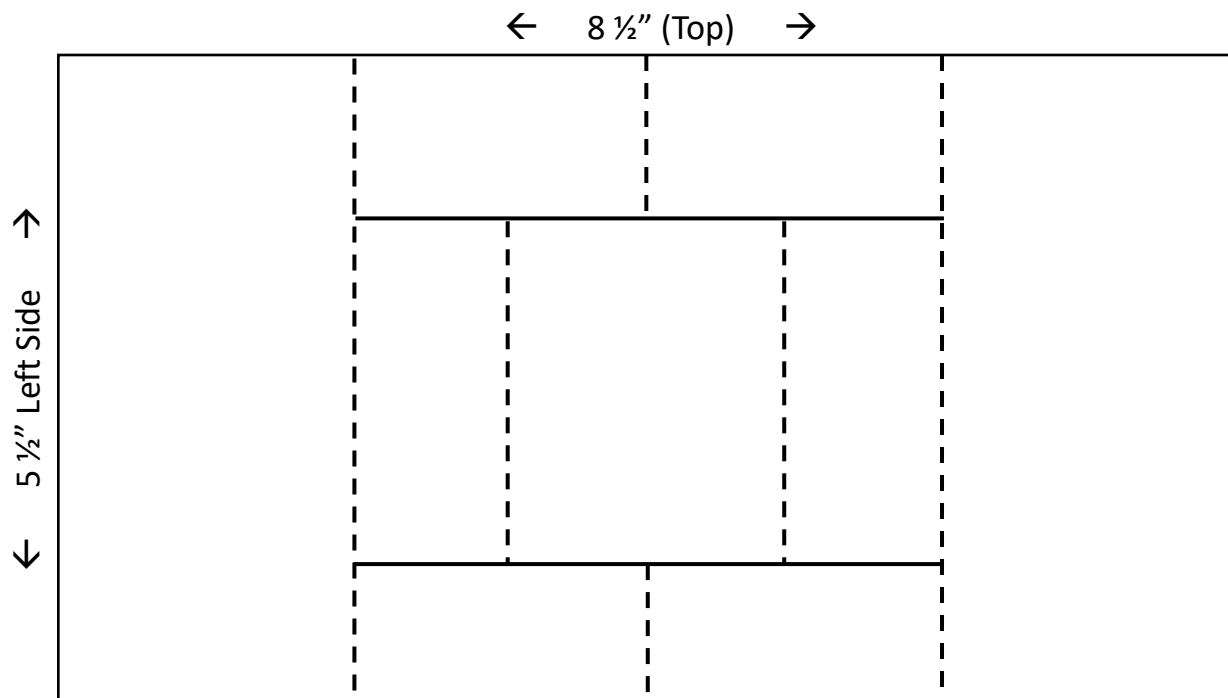
- Cut from from one fold line to the other, 1" from top and bottom

*Step 3: Score*

- 4 ¼" (down the middle) for 1" from top and 1" from bottom

*Step 4: Score*

- 3" in from each side on the middle panel only



**Also cut out:**

- (4) 1 7/8" x 5 ¼" (for matting)
- (4) 1 5/8" x 5" (I cut 2 in one color and 2 in another color)
- (4) ¾" x 1 7/8" (for matting)
- (4) ½" x 1 5/8"
- (2) 5/8" x 3 ¼" (for matting)
- (2) 3/8" x 3"
- (1) 3" x 3" (for matting)
- (1) 2 ¾" x 2 ¾"
- (1) 2" circle